



AFCO
Columns and Railings

ALUMINUM COLUMNS



STRUCTURE
&
STYLE



ALUMINUM COLUMNS

AVAILABLE IN SEVEN BEAUTIFUL FINISHES **THAT NEVER NEED REPAINTING**

GLOSS

WHITE

CLAY

WICKER

TEXTURED

WHITE

BLACK

BRONZE

BROWN

The perfect combination of stylistic design and nearly maintenance-free performance, AFCO's Aluminum Columns will draw your appreciation each time you enjoy your outdoor space.

The tensile strength of the extruded staves of the AFCO Aluminum Columns provides a structural capacity far superior to that of other load-bearing column materials. Prefinished with durable, AAMA-2604 powder coat paints and backed by a limited lifetime warranty, there is no better choice than AFCO Aluminum Columns for providing Structure to your home.

Whether classical or modern, traditional or cutting edge — from the classic Round and Square Fluted, to the box column designs of the Traditions Series — there is an AFCO Aluminum Column to complement your home's Style.

FLUTED



Old world column design
for new world outdoor living.



AFCO's Fluted Aluminum Columns represent the perfect intersection of Classical column design and nearly maintenance-free performance.

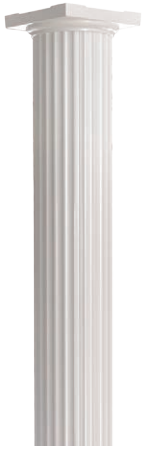
Architecturally accurate fluting is more true to Classical design than others.

Shaft staves are produced in AFCO's aluminum extrusion facilities, providing quality control from the genesis of product.

Available in Round and Square styles and in all seven standard powder-coat finishes or with a primer finish for painting on the job.

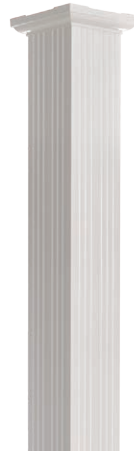
All AFCO Fluted Aluminum Columns are fully structural and meet NFPA Class A requirements for flame-spread and smoke development indexing.

FLUTED



ROUND FLUTED

Nominal Width	Heights	Centered Load Capacity* (lbs.)
6"	8', 9', 10'	20,000
8"	8', 9', 10', 12'	21,000
10"	8', 9', 10', 12'	26,000
12"	8', 9', 10', 12', 16'	30,000
15"	12', 18', 16', 20', 24'	33,000
18"	16', 18', 20', 24'	38,000
24"	18', 20', 24'	43,000



SQUARE FLUTED

Nominal Width	Heights	Centered Load Capacity* (lbs.)
3"	8', 9'	8,000
4"	8', 9', 10'	12,000
6"	8', 9', 10'	23,000
8"	8', 9', 10', 12'	24,000
10"	8', 9', 10', 12'	26,000
12"	8', 9', 10', 12', 16'	37,000

OPTIONAL CAPITALS - ROUND FLUTED



Scamozzi Capital



Corinthian Capital



*Load-bearing capacity is dependent on distributing the load evenly over bearing surfaces of the shaft.

TRADITIONS



Traditional box column designs in the simplicity of aluminum.



The Traditions Series combines the aesthetic of the traditional site-build box column with the ease of installation and virtually maintenance-free benefits of aluminum.

Aluminum shaft staves are produced in AFCO's extrusion facilities, providing quality control from the genesis of production.

Features five unique designs, each fully load-bearing and available in all seven standard powder-coat finishes or with a primer finish for painting on the job.

The base trim of the Natchez Aluminum Column is uniquely designed to accommodate installations with any AFCO-Rail Series.

TRADITIONS



WELLINGTON

Nominal Width	Heights	Centered Load Capacity* (lbs.)
6"	8', 9', 10'	12,000
8"	8', 9', 10', 12'	20,000
9"	8', 9', 10', 12'	15,000



CRAFTSMAN

Nominal Width	Heights	Centered Load Capacity* (lbs.)
6"	8', 9', 10'	20,000



NATCHEZ

Nominal Width	Heights	Centered Load Capacity* (lbs.)
6"	8', 9', 10'	12,000
8"	8', 9', 10', 12'	20,000
9"	8', 9', 10', 12'	15,000



ACADIAN

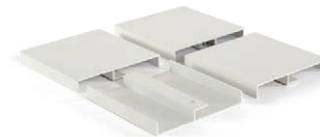
Nominal Width	Heights	Centered Load Capacity* (lbs.)
6"	8', 9', 10'	24,000
8"	8', 9', 10', 12'	50,000
9"	8', 9', 10', 12'	50,000



EMPIRE

Nominal Width	Heights	Centered Load Capacity* (lbs.)
6"	8', 9', 10'	12,000
8"	8', 9', 10', 12'	20,000
9"	8', 9', 10', 12'	15,000

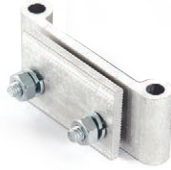
Recessed Panel Divider Blocks



*Load-bearing capacity is dependent on distributing the load evenly over bearing surfaces of the shaft.

COLUMN ACCESSORIES

AFCO Hurricane Bracket System



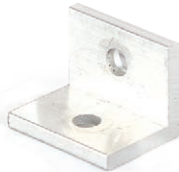
- Wind Uplift Tie-Down System meets ASCE 7-02 for 150 MPH winds
- Includes attachment fasteners for both wood and concrete installations.
- Kit includes four brackets that are hidden under the column capital and base.
- Available for 6" and 8" Fluted and all Traditions Series Aluminum Columns.

Load Bearing Plates



- 1/4" Thick aluminum plates distribute weight load evenly across the full column.
- Hidden under the column capital once installed.
- Available in five sizes to accommodate most common Aluminum and Fiberglass Column sizes and styles.

Aluminum Column Hold Down Clips



- "L" shaped brackets for securing any Aluminum Column style in place.
- Hidden under column capital and base once installed.
- Packaged in set of six clips for one column.

COLUMN WRAP & CUT OPTIONS

To accommodate your home's unique Style, AFCO can configure a custom cut of most of its Aluminum Column styles to meet those needs.

	Square	Round
Full		
Pilaster		
Engaged		
Three-Quarters		
One-Quarter		
End		

VINYL POSTS & WRAPS



Maintenance-free vinyl provides value in traditional post styles.

For a Turned Post look, the Colonial Post provides that aesthetic. Features an aluminum insert for structural support.

Vinyl Post Sleeves are designed to slide over a nominal 4" X 4" wood post in new construction for an economical, maintenance-free post solution.

Vinyl Post Wrap snap around an existing, nominal wood post with interlocking cap and base trims to wrap the post as well.



Colonial **Post Wrap**

POSTS

Post Width	Post Style	Post Height 44" 108"
4"	Colonial	•
5"	Colonial	•

Colonial Post includes structural Aluminum Insert and Vinyl Colonial Post Sleeve. Optional Cap and Base Trim Set available.

POSTS WRAPS AND SLEEVES

Post Width	Post Style	Post Height 44" 108"
4"	Post Sleeve	• •
	Post Wrap	•
6"	Post Wrap	•

Post Sleeve includes Vinyl Square Post Sleeve, Cap and Post Base Trim

Post Wrap includes four Vinyl Post Wrap sides, to snap around nominal wood square post of noted width, and Cap and Base Trim Set.



One of the most respected names in the building materials industry since 1946, AFCO Industries operates four US manufacturing facilities specializing in Aluminum, Fiberglass and Vinyl production. AFCO, a 100% Employee-Owned ESOP corporation, is the only vertically integrated manufacturer of Aluminum and Fiberglass Columns and Railing systems in the country, as well as being an OEM producer. Trust AFCO's 70 years of American manufacturing experience for your project's column and railing needs.

 pinterest.com/AFCOColsRails

 fb.com/AFCOColsRails

 [@AFCOColsrails](https://twitter.com/AFCOColsrails)

PROUDLY
AMERICAN
★ MADE ★