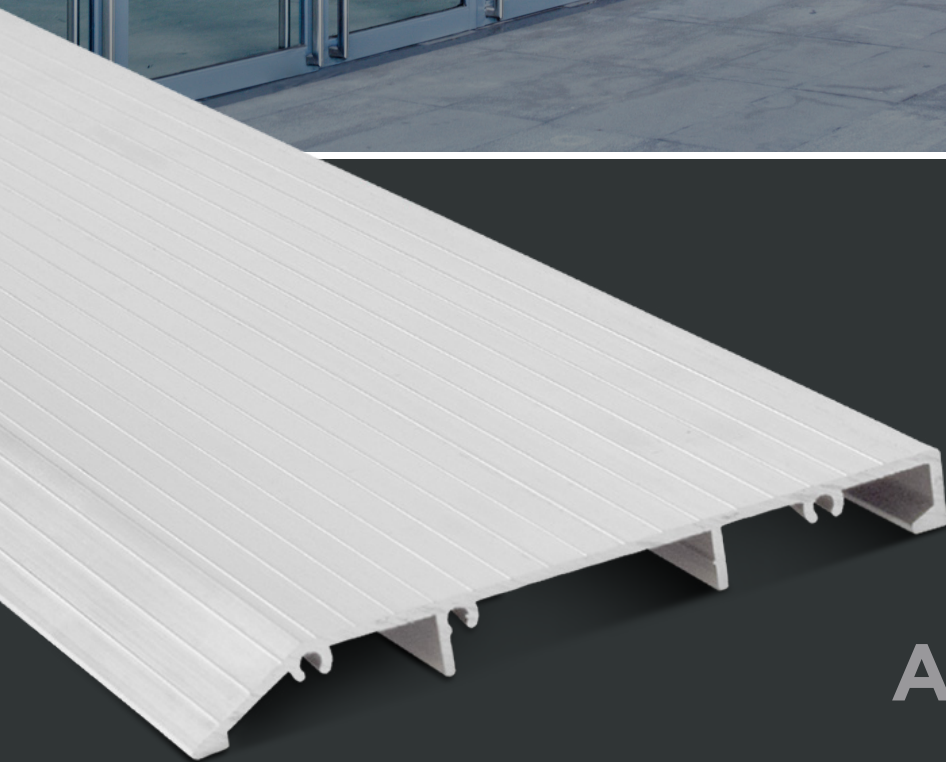




AFCO

Millwork Products

MILLWORK / ENGINEERED



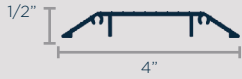
ADA SILLS

PROUDLY
AMERICAN
★ MADE ★

ADA SILL PROFILES

SADDLE

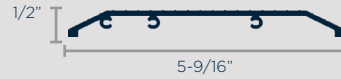
A-209



A-204



D-5916



A-202



A-207



A-208



A-210



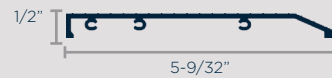
A-245NB



A-205T



D-528



A-207T



A-4916



A-204BS



D-204BT



A-255BS



A-207BS



A-207BT



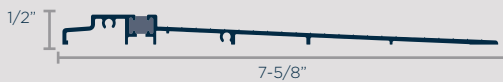
A-558TB



A-558OS



A-758TB



A-758OS



TILE BACK
NO BACK

BUMPER

THERMALLY
BROKEN

FINISH

DARK
BRONZE

MILL
FINISH

A-209

A-204

D-5916

A-202

A-207

A-208

A-210

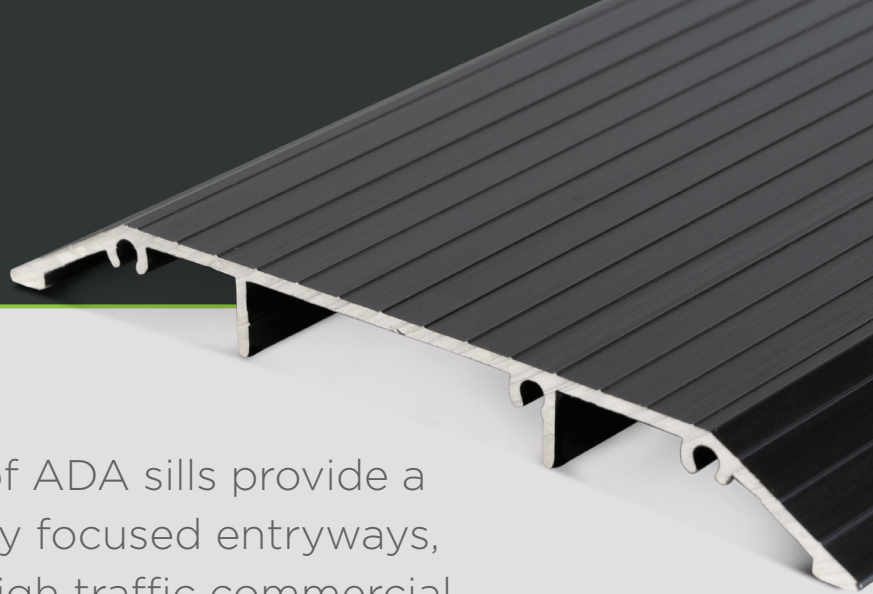
A-245NB

A-205T

D-528



ADA SILL FEATURES

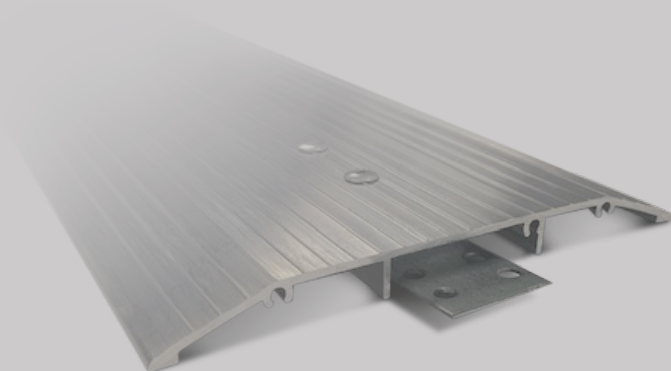


AFCO Millwork Products line of ADA sills provide a durable solution for accessibility focused entryways, in either residential homes or high traffic commercial applications

- Made of extruded aluminum
- Designed to the 1/2" height to accommodate accessibility requirements
- Integrated screw bosses for easy attachment of jambs
- Multiple Styles; Saddle, Tile and No Back, Bumper and Thermally Broken
- Optional countersunk holes for through-sill installation in the field

ADA Mounting Bracket

Optional, factory-installed brackets provide additional support of the sill attachment to the jamb



A-207T A-4916 A-204BS A-204BT A-255BS A-207BS A-207BT A-558TB A-558OS A-758TB A-758OS





One of the most respected names in the building materials industry since 1946, AFCO Industries operates four US manufacturing facilities specializing in Aluminum, Fiberglass, Vinyl and Composite production. AFCO, a 100% Employee-Owned ESOP corporation, is the only vertically integrated manufacturer of Door Components and Column and Railing systems in the country, as well as being an top tier OEM producer. Trust AFCO's 70 plus years of American manufacturing experience for your project's needs.

AN EMPLOYEE



OWNED COMPANY

CUSTOMER SERVICE MANUFACTURING

AFCO MILLWORK PRODUCTS
11000 GREEN VALLEY DRIVE
OLIVE BRANCH, MS. 38654

O - 800.238.0183

F - 888.246.0363

 /company/AFCO-Industries-Inc

 @AFCOInd

 afcomillworkproducts.com



VER.0123